



PORTABILITY MEETS POWER

Gone are 9-to-5 workdays in an office. Today, many employees work outside traditional hours or telecommute. And while laptops and tablets are great for portability, they lack the computing power provided by workstations. So what about mobile "power users" who need robust workstations to handle compute-intensive apps? Fortunately, you don't have to sacrifice power for mobility.

THE MOBILE WORKPLACE IS EXPANDING.



The U.S. mobile worker population is **96.2 million** strong.

It's expected to reach **105.4 million** in 2020.¹

EMPLOYEES WHO USE MOBILE APPS TO PERFORM WORK ARE **34%** MORE PRODUCTIVE.²

61%

of workers report working outside the office at least part of the time.³

64%

of managers expect employees to be reachable outside the work day.⁴

Clearly, the workforce of today—and tomorrow—requires mobile flexibility.



WHAT ABOUT "POWER USERS"?

Many power users need more processing capacity than the average laptop provides—they need the power of a workstation.

WHO ARE THESE POWER USERS?

Engineers

Scientists

Artists

Video professionals

Designers

CAD professionals

These types of users require extra power due to the apps they use—and workstations match their app requirements in 5 key ways:



In addition, workstations provide:



MORE PERFORMANCE PER WATT



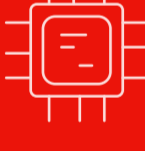
EXPANDABLE I/O SUBSYSTEMS



OPTIMIZATION FOR MULTITASKING



PROFESSIONAL-GRADE PARTS AND COMPONENTS



HIGH-POWERED PROCESSOR TO HANDLE LARGE PROGRAMS



TOP-OF-THE-LINE TECHNOLOGY THAT INCREASES SYSTEM RELIABILITY

The only issue? While traditional workstations are built for high performance and heavy workloads, they tether users to desks.

THE SOLUTION: WORKSTATION POWER IN A TRULY MOBILE FORM FACTOR.

The mobile Lenovo ThinkPad P50s workstation is changing mobile expectations.



TRUE PORTABILITY

- The 15.5-inch ThinkPad P50s starts at 5.6 lbs.



WORKSTATION POWER

- The Intel Core i7-6600U 2.60 GHz processors are 0.70 GHz faster than the average embedded processor⁶
- Tested by Intel to handle a maximum speed up to 3.40 GHz⁶



ALL-DAY BATTERY

- Up to 10 hours of battery life

THE THINKPAD P50s MAKES ALL THE DIFFERENCE.

"Battery life has been the biggest complaint I hear about our laptops, along with size and weight. Laptops across the board are getting smaller, lighter, and longer battery life. The P50s really is stepping it up a notch, though, and providing a solid balance between the three."

- IT PROFESSIONAL⁷



With the ThinkPad P50s, users get the portability for today's workplace—and the power to get more done, even when using processor-intensive programs. The P50s incorporates Ultrabook mobility with powerful, cutting-edge processing, all-day battery life, and rugged construction—as well as high-resolution video with discrete graphics, multi-port flexibility, and business-class security.

LEARN MORE



The ThinkPad P50s, powered by an Intel® Core™ i7 processor. Intel Inside®. Powerful Productivity Outside.

Lenovo™

¹ "U.S. Mobile Worker Forecast, 2015-2010," IDC, May 2015. <http://www.idc.com/getdoc.jsp?containerId=256194>

² "Apps 'Boost Worker Productivity 34%,'" Digital Strategy Consulting, May 27, 2014. http://www.digitalstrategyconsulting.com/intelligence/2014/05/apps_boost_worker_productivity_34.php

³ "7 Enterprise Mobility Statistics You Should Know," Citrix, June 12, 2015. <https://www.citrix.com/articles-and-insights/workforce-mobility/jun-2015/7-enterprise-mobility-statistics-you-should-know.html>

⁴ "The 2015 Workplace Flexibility Study," Workplace Trends and Career Arc, February 2015. <http://web.careerarc.com/2015-workplace-flexibility-study.html>

⁵ "Workstation vs Desktop Computer: Which Does Your Office Need?" Autodesk's Line//Shape//Space, March 19, 2013. <https://lineshapespace.com/pc-versus-workstation/>

⁶ "Intel Core i7-6600U," Specout. <http://processors.specout.com/1/1875/Intel-Core-i7-6600U>

⁷ Spiceworks SpicePanel of 12 IT decision-makers who tested the ThinkPad P50s and shared their feedback in a private online forum, April 2016.